

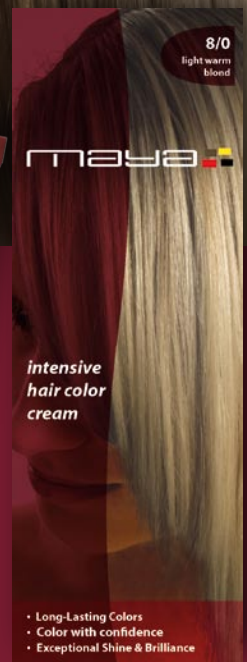
THE 10 MOST FASHIONABLE SHADES CHOSEN BY YOU!

MAYA



intensive hair color cream

Maya Intensive Hair Color Cream is a rich, creamy, non-drip formula which protects and pampers hair during and after processing, leaving beautiful and shiny hair. Choose from a wide range of luminous color shades by Maya for more brilliance & shine.



- Long-Lasting Colors
- Color with confidence
- Exceptional Shine & Brilliance

SIMPLY IRRESISTIBLE

