

# Wave Pro STRAIGHTENER



**Instructions for use:** The WAVE PRO Straightener formula is the result of in-depth research. In its development, care was taken to not only make it highly effective when it comes to the long-term straightening of curly hair, but to also make sure the treatment with it is

gentle on your hair. Depending on the structure and condition of your hair, you may choose between two intensity levels:

- strong
- normal

If you have very thin, brittle, otherwise damaged or colored hair, please mix WAVE PRO Straightener strong or normal with an additional treatment product, e.g. WAVE PRO Hair Mask, as follows:

strong: 1 part WAVE PRO Straightener cream + 1 part Kamand Hair Mask

normal: 2 parts WAVE PRO Straightener cream + 1 part Kamand Hair Mask

**NOTE:** The basis of your choice of the intensity level should always be the condition your hair is in at the time you decide to apply WAVE PRO Straightener, and not the degree of any natural curl or wave you may have.

**Important:** Before applying the straightener to all your hair, please carry out a test on one single strand to assess your hair's reaction to the formula and to evaluate the ideal development time in your particular case. Follow the steps indicated below for accurate test results:

Apply a small amount of WAVE PRO Straightener cream to a strand of your hair and spread it evenly along the shaft and to the tips. Leave it in for 5 to 10 minutes and then comb the strand, using a non-metallic device (cf. below). Repeat the application of WAVE PRO Straightener cream, this time allowing it to act for up to 20 minutes. Rinse thoroughly. As a next step, apply a few drops of WAVE PRO Straightener neutralizing cream on the strand and comb that part of your hair as before. Let the neutralizer act for 5 to 10 minutes before rinsing it out.

**NOTE:** If the result of the strand test is broken or in any other way damaged hair, please do not use WAVE PRO Straightener until you have had your hair undergo some repair treatment.

- Do not use WAVE PRO Straightener if your scalp is irritated or shows scratches or other damage.
- If you plan to color your hair after treatment with WAVE PRO Straightener, please wait for 1 week before doing so.
- If you wish to intensify the effect reached in the first treatment, you may repeat the application, but let 1 week pass before this, the second stage of the straightening procedure.
- Do not apply WAVE PRO Straightener to hair that has previously undergone treatment with alkaline relaxers.

## APPLICATION Step-by-step instructions

**NOTE** before usage:

- Do not shampoo your hair before applying WAVE PRO Straightener.
- We recommend that you ask somebody for assistance with the application.

1) Sectioning your hair  
WAVE PRO Straightener cream and neutralizer are easier to apply if you section your hair in the way indicated in the picture.

**NOTE:** Hair to which a straightener is to be applied for the first time needs different treatment than hair that has been straightened before. If you wish to retouch an ap-

plication, apply the cream to newly grown hair only. It is recommendable to use some treatment cream like WAVE PRO Hair Mask on the shafts and tips of your hair, particularly if they appear damaged in one way or another.

### 2) Applying the cream

- Take a plastic (non-metallic!) bowl and squeeze WAVE PRO Straightener cream into it.
- Apply WAVE PRO Straightener cream to separate strands one at a time, using an application brush and starting from the nape of the neck upwards. It is very important that you proceed fast.

**NOTE:** Leave a space of about a finger's breadth from the scalp when applying WAVE PRO Straightener cream to prevent your hair from breaking.

### 3) Development phase I

After having applied WAVE PRO Straightener to the last strand of hair (i.e. the one closest to your forehead), allow the cream to develop for the following period of time according to the structure of your hair:

hair structure	total development time
thick hair	10 minutes
thin or damaged hair	5 minutes

**NOTE:** Do not cover your head or use heat or other drying devices during this procedure!

### 4) Straightening your hair

Starting from the nape again, and continuing section by section as before, you can now begin straightening your hair by running the back of a comb along your head. In the process, some of the cream will gather on the comb. Please re-apply it to the respective strand of hair you have just been smoothing.

**NOTE:** Use diligent but swift strokes. This part of the straightening procedure must not take more than 5 minutes.

### 5) Development phase II

The periods of time applicable in this development phase are determined according to your hair's condition immediately prior to straightening. For best results, start testing the effect of the straightening procedure on thin strands of the treated hair with your fingers or a comb after the respective period specified in the table below.

hair condition	start of testing	total development time
strong / resistant	after 10 minutes	max. 22 minutes
normal / slightly dry	after 8 minutes	max. 20 minutes
thin / brittle	after 5 minutes	max. 15 minutes
damaged / colored	after 5 minutes	max. 15 minutes

**NOTE:** During this phase it is important that you do neither apply any additional heat nor comb your hair.

### 6) Rinsing your hair

Once the desired flattening effect has been reached, rinse your hair thoroughly. Remove any excess moisture using a cloth or paper towel.

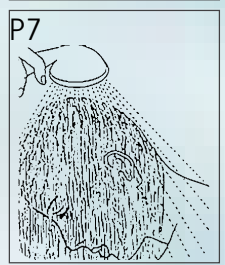
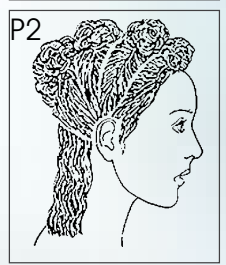
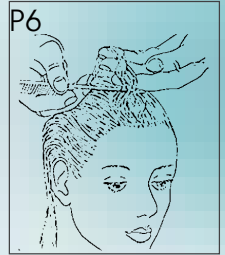
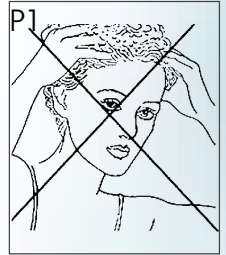
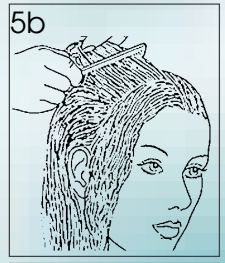
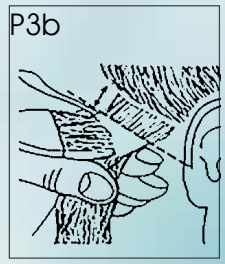
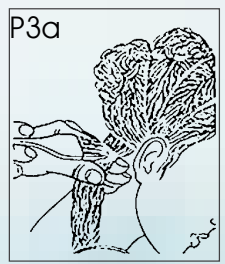
**NOTE:** Avoid rubbing your hair, and do also not comb it as yet!

### 7) Neutralizing procedure

Spread WAVE PRO Straightener neutralizer evenly over your hair. Massage it in a little before running a wide-toothed comb gently through your hair. Let the neutralizer cream stay in for 10 to 15 minutes and comb your hair at several intervals during that time to enhance the straightening effect. Finally, rinse your hair thoroughly once again.

### 8) Finishing treatment

To avoid any chemical residues from staying in your hair we recommend applying a neutralizing product from the WAVE PRO Conditioner family after the straightening procedure, which will also add to your hair's healthy and shiny look.



P1

P2

P3

5a

5b

P6

P7